



MAXIM
DEFENSE™

CQB STOCK INSTALLATION GUIDE

BE 100% CERTAIN YOUR FIREARM IS UNLOADED!

TOOLS YOU WILL NEED:

- Lower receiver vise block
- Castle nut wrench or AR15 armorer's tool

WHAT'S IN THE BOX?

- Complete stock
- Buffer system
- LOP set screws



STEP 1: Secure your lower receiver into a vise block. Remove your existing stock if one is installed. **NOTE:** You will not need the stock end plate when using the PDW Stock.



STEP 2: Ensure the receiver extension is inserted into the stock housing and your rear takedown pin detent and spring are in place. Begin to screw the receiver extension into your receiver. Do not completely tighten.



STEP 3: Insert buffer detent. Hold in place while you continue screwing in the receiver extension. **NOTE:** The buffer detent is not necessary if you are using the JP Silent Captured Spring.



STEP 4: Use your castle nut wrench to finish tightening the receiver extension.



MAXIM
DEFENSE™



STEP 5: Insert proprietary buffer assembly, either the Maxim Buffer & Spring, or exclusive JP Silent Captured Spring



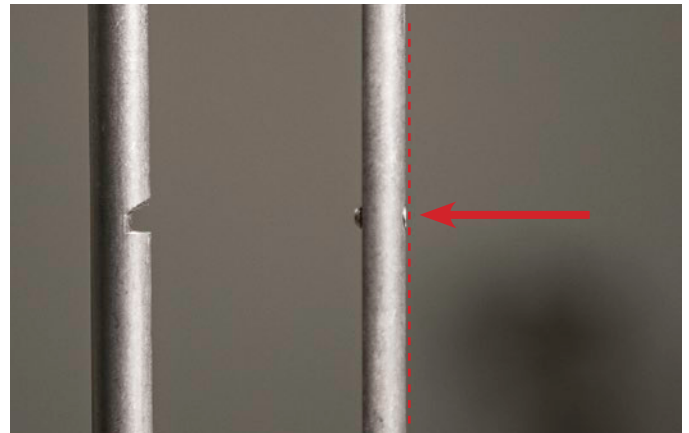
STEP 6: Squeeze the adjustment lever and take down lever together and insert guide rods of stock into the housing. Once past the first stop, you will only need the larger adjustment lever to adjust length of pull.

YOUR STOCK INSTALLATION IS NOW COMPLETE. To deploy the stock, simply grab it and pull. There is no need to engage the adjustment tab. If you'd like to have your stock stop in the same position each time it's deployed, utilize the included set screw. To install, follow the instructions below:

LENGTH OF PULL PRESET SET SCREW INSTALLATION GUIDE *Not applicable on pistol braces



STEP 1: Pick your length of pull preset position. You can choose from either of the two center positions. Begin screwing the set screw in from the outside.



STEP 4: Be sure your set screw is seated flush on the outside of the stock. This will keep your stock from dragging on the housing, allowing to move freely.

